

Quality is more than a word

ESPEC



Web Integrated Network System

ESPEC ONLINE SERIES

ESPEC OnlineCore

OnlineCORE

ESPEC OnlineConverter

OnlineCONVERTER



ESPEC

In parallel to development of new technologies and industrial products, demand of coordination of test equipment and surrounding devices is increasing. ESPEC has developed new product “ESPEC ONLINE SERIES” that can provide you easy-to-use and advanced functions for test chamber management through the network system.

**Online operation expands environmental test potential.
The best solution for centralized control and
the upgrade of test equipment’s functions.**

ONLINE



The combination of ESPEC ONLINE SERIES and Ethernet makes possible to design your own centralized control system. Remote operation on web browser opens the door to your new test management.

SERIES

CASE ①

If several languages would be available, I could manage it more easily.

CASE ②

It is troublesome to go around several test areas in order to check out test settings or their results etc.

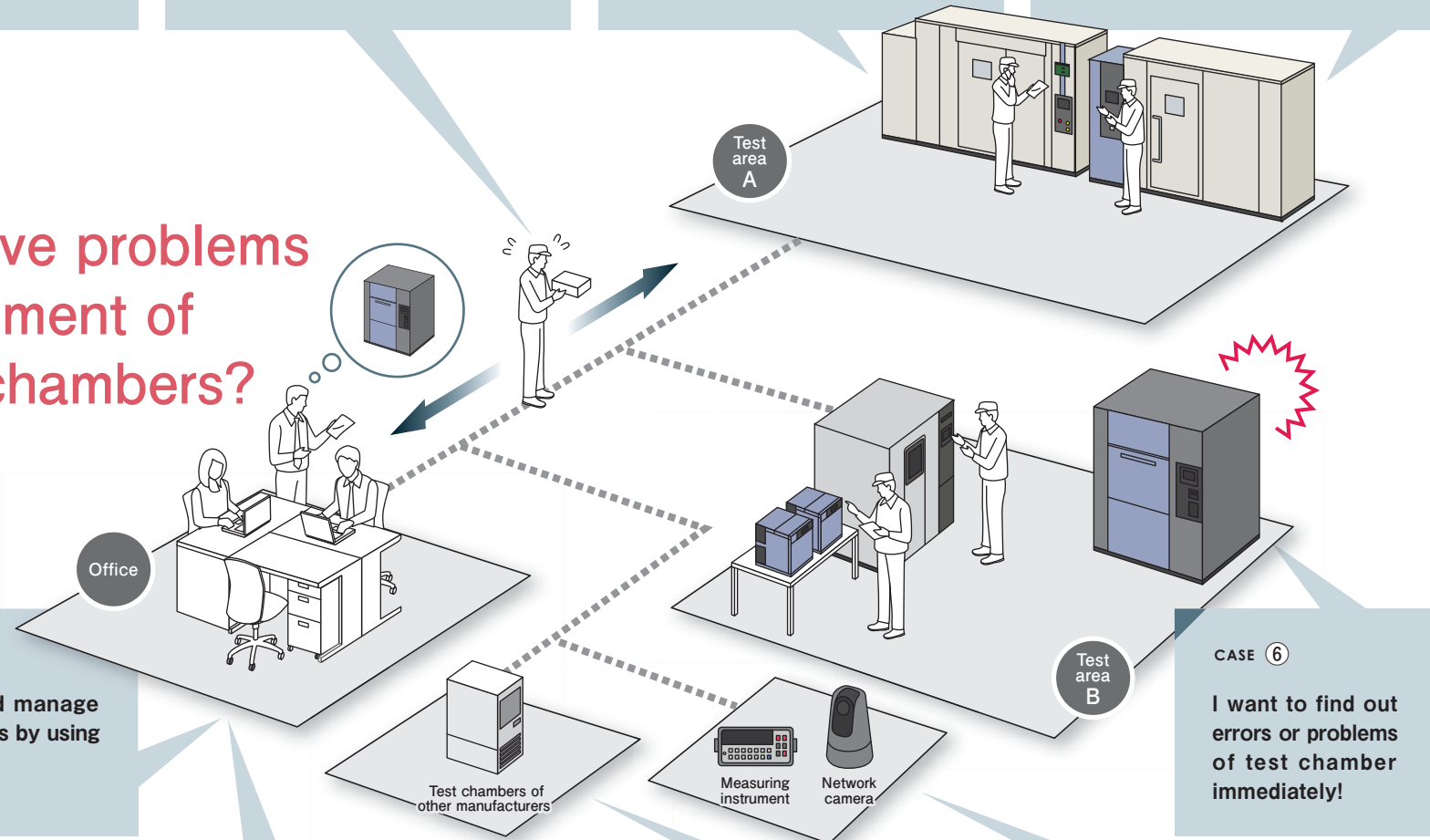
CASE ③

I wish the transmitting program pattern data or storing test results would be much easier.

CASE ④

It takes me time to input program patterns of different test standards.

Do you have problems in management of your test chambers?



CASE ⑤

I want to control and manage various test equipments by using only one computer...

CASE ⑥

I want to find out errors or problems of test chamber immediately!

CASE ⑦

I want to save my time visiting a test area just for setting up the test chambers.

CASE ⑧

I want to have a better overview of test equipment's operating schedule, so that several tests could be performed efficiently.

CASE ⑨

Regardless of manufacturer differences, I want to control all chambers at the same time.

CASE ⑩

Is there any way I can monitor network cameras, measuring instruments or other devices integrally?

CASE ① OnlineCORE OnlineCONVERTER

Multi-language Support

English, Chinese (Traditional, Simplified), Korean, German, Russian, Spanish and Japanese are now available.

CASE ③ OnlineCONVERTER

Program Pattern Editing

Program pattern data can be stored on a computer and transferred to test chambers in a quick and easy way.

Data Logging

Temperature and humidity data are recorded for a specified period.

Automated Test Data Transfer

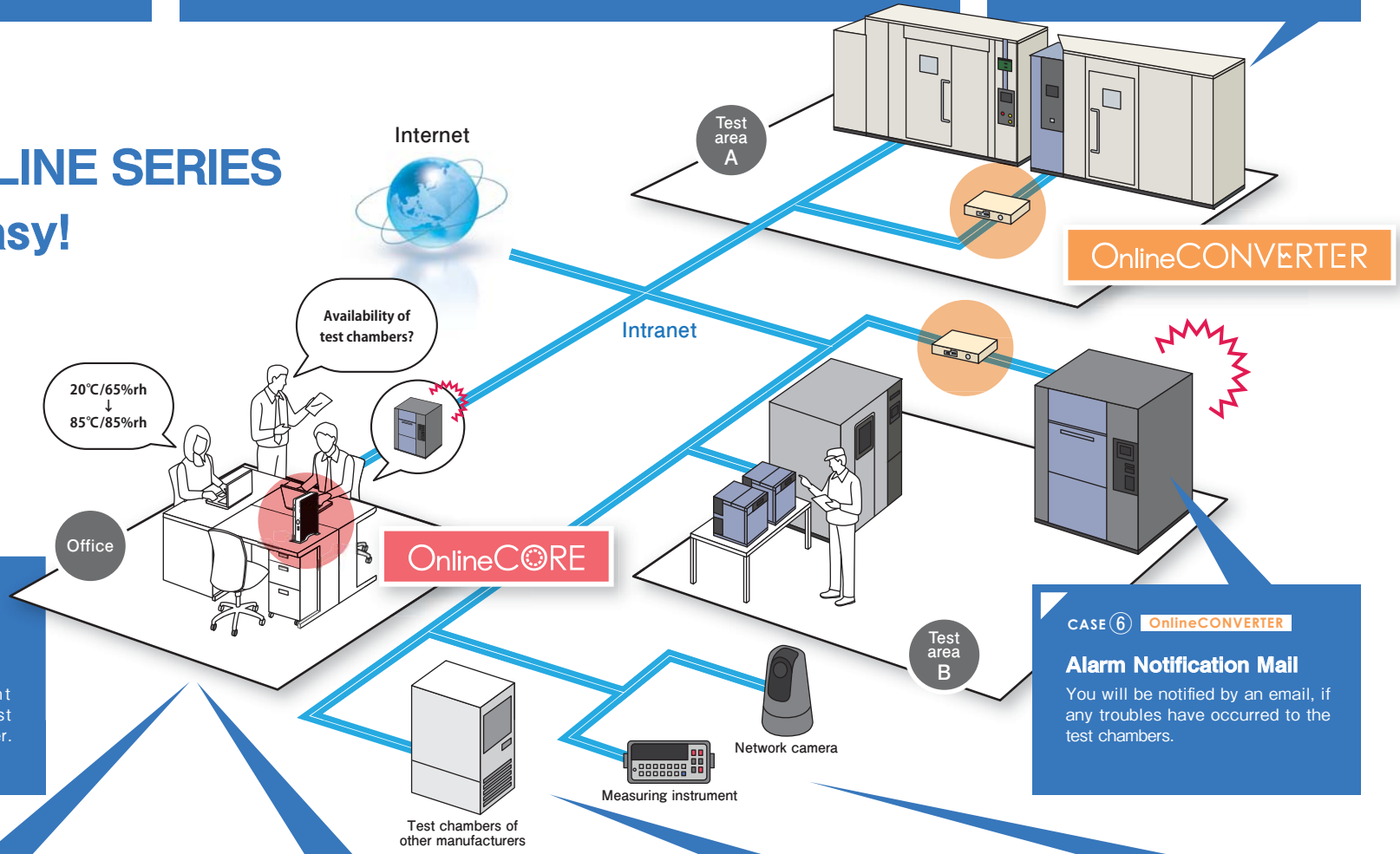
Test data can be automatically transferred to OnlineCore or FTP server.

CASE ④ OnlineCONVERTER

Download of Test Pattern

Program patterns for various test standards can be downloaded from the Test Navi product membership site www.test-navi.com and copied to test chambers easily.

ESPEC ONLINE SERIES makes it easy!



CASE ②⑤ OnlineCORE

Centralized Control Monitor

You can observe current operating status of all test equipments by one computer. (Up to 100 test equipments)

CASE ⑦ OnlineCONVERTER

Remote Control

By setting temperature and humidity condition via a web browser, you can operate test chambers remotely.

CASE ⑧ OnlineCORE

Test Pre-completion Notification

You will be notified by an email shortly before the test finishes.

Schedule Management

You can administrate test schedules of several test chambers as well as surrounding devices.

CASE ⑨ OnlineCORE

Multi Connection to Several Test Chambers

Connection with other manufacturers' test chambers is also supported. For more details, please contact us or your distributors.

CASE ⑩ OnlineCORE

Surrounding Device Monitor

Connection to several surrounding devices, such as network cameras, measuring instruments is also supported.

CASE ⑥ OnlineCONVERTER

Alarm Notification Mail

You will be notified by an email, if any troubles have occurred to the test chambers.

ESPEC OnlineCore
OnlineCORE
 Model : PCS-ES



The centralized control system,
 which is recommended for multiple test chamber user.

You can easily observe the operational status of environmental test chambers by connecting to an existing intranet. With this function, you can also connect to various surrounding devices like network cameras and test devices, and also to test chambers of other manufacturers.

Schedule management	Peripheral device monitor *1	Test pre-completion notification
Centralized control monitor	Multi connection to several test chambers *2	Multi-language support

*1 See the next page for applicable models.

*2 For more detailed information for cooperativity or connectivity or setting up the centralized monitoring system, please contact ESPEC.



ESPEC OnlineConverter
OnlineCONVERTER
 Model : PN5-CN

An adapter for test chambers
 which do not support Ethernet connection.

Using this adapter, you can connect to the LAN Network only by connecting it to the RS-485 port. You can check the operational status of several test equipment remotely on the Web browser.

Remote monitoring	Alarm notification mail	Program pattern editing
Remote control	Data logging & automated transfer	Multi-language support



Applicable Models and Conditions

Products Supported by OnlineCORE

Please check if the ESPEC test chamber unit is equipped with an Ethernet (LAN) port.

	Product name	Model	
ESPEC Products	Temperature (and Humidity) Chamber / Platinous J Series	PR, PL, PU, PSL, PG, PHP, PDR, PDL, PCR	
	Temperature (and Humidity) Chamber Walk-in E Series	EBE, EBL, EBR, EBF, EBU, EBUU, TBE, TBL, TBR, TBF, TBU, TBUU	
	High-power Temperature (and Humidity) Chamber (N-instrumentation)	ARG, ARL, ARS, ARU	
	Bench-top Type Temperature (and Humidity) Chamber	SH/SU-**2	
	Constant Climate Cabinet	LH/LHL/LHU/LU-***4	
	Compact Ultra Low Temperature Chamber	MC-**2(R)	
	Stability Test Chamber	CSH-**2(HG)	
	Stability Test Room	CWH	
	Air Thermal Shock Chamber	TSA-***3, TSD-101-W	
	Web Manager	WMA-STD, WMA-TS, WMA-Multi	
	Web Controller	**	
	RS-485 LAN Converter	CONV-L4	
	ESPEC OnlineConverter	PN5-CN	
	Other Manufacturers' Products*	Standard Environmental Test System	Please contact ESPEC for more information, which products to be connected.
		Digital Multi-meter	
Recorder			
Network Camera			
Water Purification System			
Remote I/O			

* Please note: Even if a device is equipped with an Ethernet port, you still may not be able to connect to the network.

** Supply from ESPEC NORTH AMERICA, INC.

● ESPEC chamber which equips RS-485 can be connected to OnlineCore via OnlineConverter.

● Before connecting to the LAN, please check whether your test chambers is equipped with RS-485 port. Depending on the manufacturing year or the option combination, RS-485 port may not be equipped. Please note that OnlineConverter cannot be connected to the chamber, if the RS-485 port is already used for another function.

● In case of connecting ESPEC products which are not listed above or test equipments of other manufacturers, please contact ESPEC.

ESPEC CORP.

3-5-6, Tenjinbashi, Kita-ku, Osaka 530-8550, Japan

Tel : 81-6-6358-4785 Fax : 81-6-6358-4786

<http://www.espec.co.jp/english>

Products Supported by OnlineCONVERTER

Product name	Model
Platinous K Series (P-instrumentation)	PR, PL, PSL, PDR, PDL, PCR, PWL, PU, PG, PWU
Walk-in H Series (P-instrumentation)	EBE, EBL, EBR, EBF, EBU, EBUU, TBE, TBL, TBR, TBF, TBU, TBUU
Free Access Environmental Chamber (P-instrumentation)	PFL, PFU
High-power Temperature (and Humidity) Chamber (P-instrumentation)	ARG, ARL, ARS, ARU
Temperature and Vibration Combined Environmental Test Chamber (P-instrumentation)	PVL, PVS, PVU, PVG
Bench-top Type Temperature (and Humidity) Chamber	SH / SU-**1
Constant Climate Cabinet	LH / LHL / LHU / LU-***3
Compact Ultra Low Temperature Chamber (P-instrumentation)	MC-**1P
Faster Temperature (and Humidity) Chamber	SMG, SML, SMS, SMU
Rapid-Rate Thermal Cycle Chamber	TCC-150W
Highly Accelerated Stress Test System	EHS-**1(M)(MD) ***
Thermal Shock Chamber	TSA-**1, **2, TSD-100
Compact Thermal Shock Chamber	TSE-11-A
Liquid to Liquid Thermal Shock Chamber	TSB-21, 51
Temperature Chamber (M-instrumentation)	PV(H)-212M, 222M, 232M, 332M SPH(H)-102M, 202M, 302M, 402M PH(H)-102M, 202M, 302M, 402M IPH(H)-202M STPH 102M, 202M GPH(H)-102M, 202M SSPH 102M, 202M
Clean Oven (M-instrumentation)	PV(H)C-212M, 232M, 332M PVHC-232MS, 332MS

*** Data logging and remote control are limited. Please ask ESPEC for details.

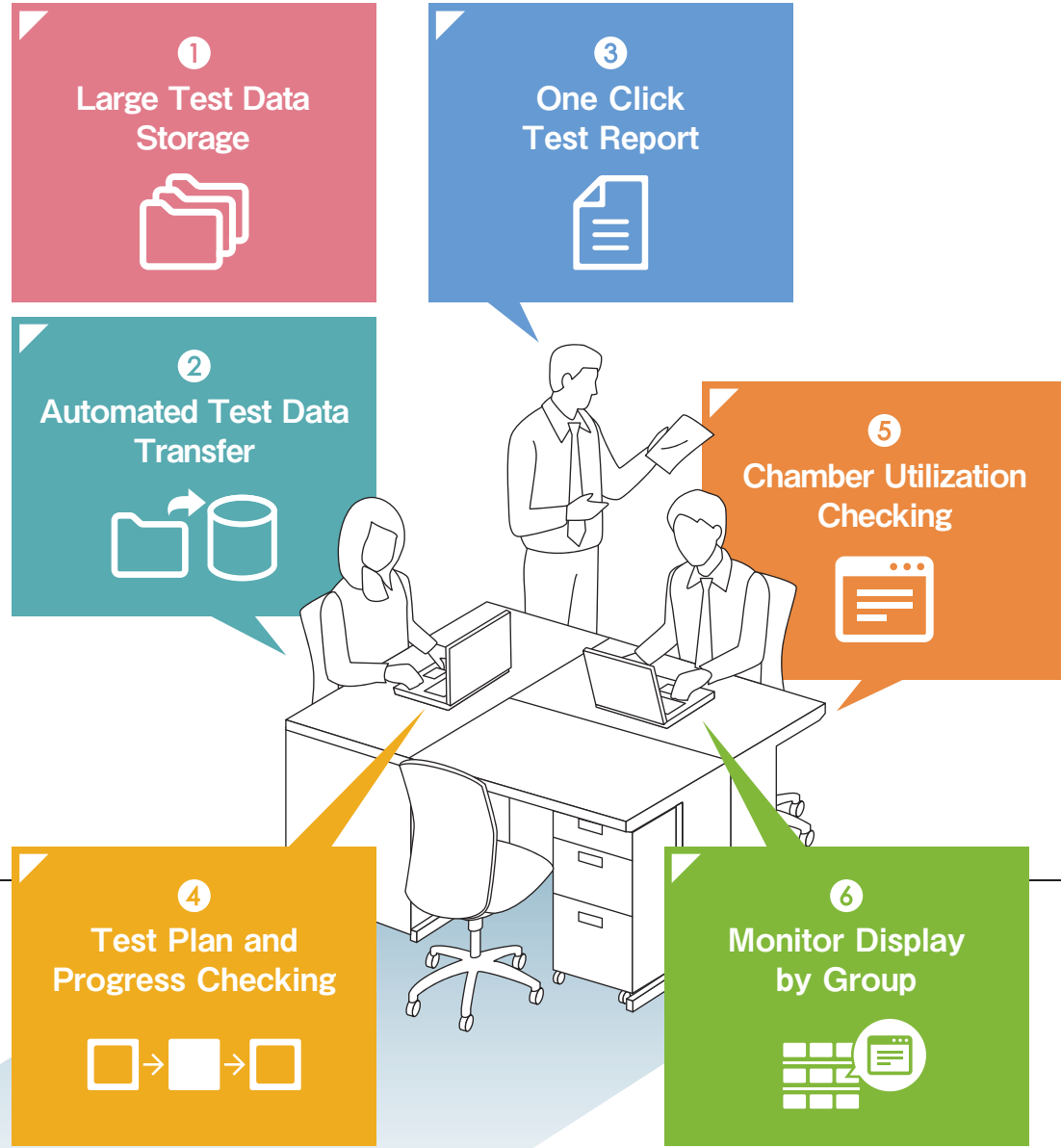


Automation from Test Plan to Report Creation

This package option adds features such as saving test data and monitoring test progress to "OnlineCore," our web integrated network system.

This new testing style brings much more convenience and user-friendliness to Espec chambers.

OnlineCORE OPTIONS PACKAGE
Test Management Advanced Package
[Espec OnlineCore option]



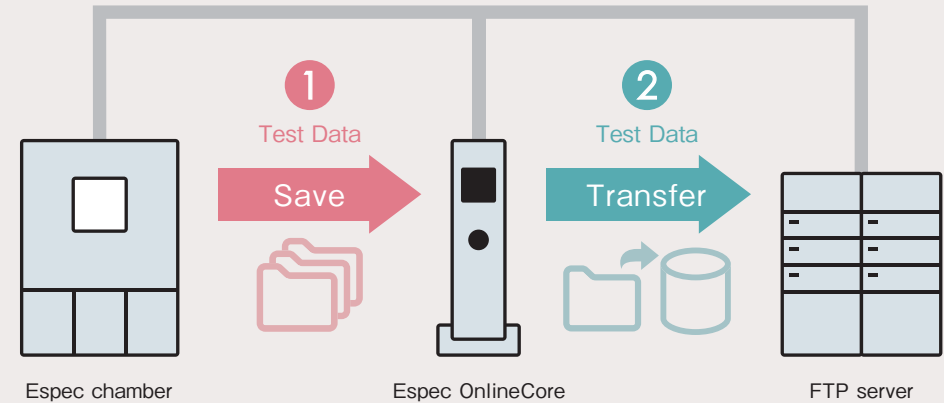
MAIN CHARACTERISTICS

1 Large Test Data Storage

- Test data files are transferred from Espec chambers and saved to OnlineCore.
- About 10-year operation data of 100 chambers can be saved. (It may differ by logging interval.)

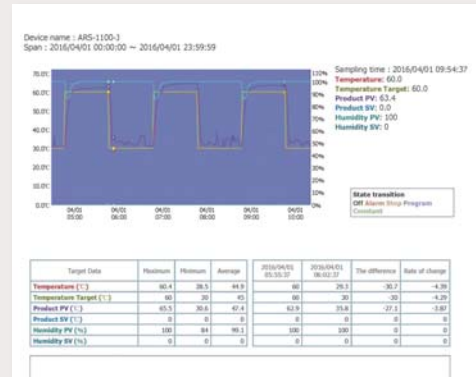
2 Automated Test Data Transfer

- In case of losing data stored in OnlineCore, test data is automatically transferred to specified FTP server as backup.
- *FTP server is not supplied.
- Data management (collection and save) is in accordance with ISO/IEC 17025.



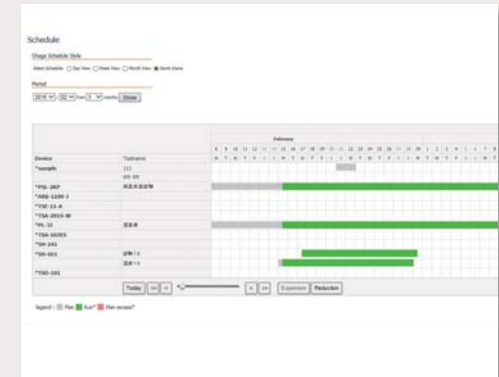
3 One Click Test Report

- From test schedule and operation record, test report is created by clicking a button.
- Graph, free comments, simple analysis, and export to CSV file are available.



4 Test Plan and Progress Checking

- In conjunction with chamber Gantt chart is automatically updated.
- According to test progress, estimated test closing time is automatically calculated. In case the estimated test closing time exceeds reserved period, it alerts by e-mail.



5 Chamber Utilization Checking

- Analyzing utilization helps to plan for additional chambers.
- Idle chambers can be recognized.
- It calculates utilization and total operation time in the arbitrary period.

6 Monitor Display by Group

- Display the connected chambers in arbitrary group such as arranged group by floor or room.
- Up to 10 groups to register.